

—

—

—

—

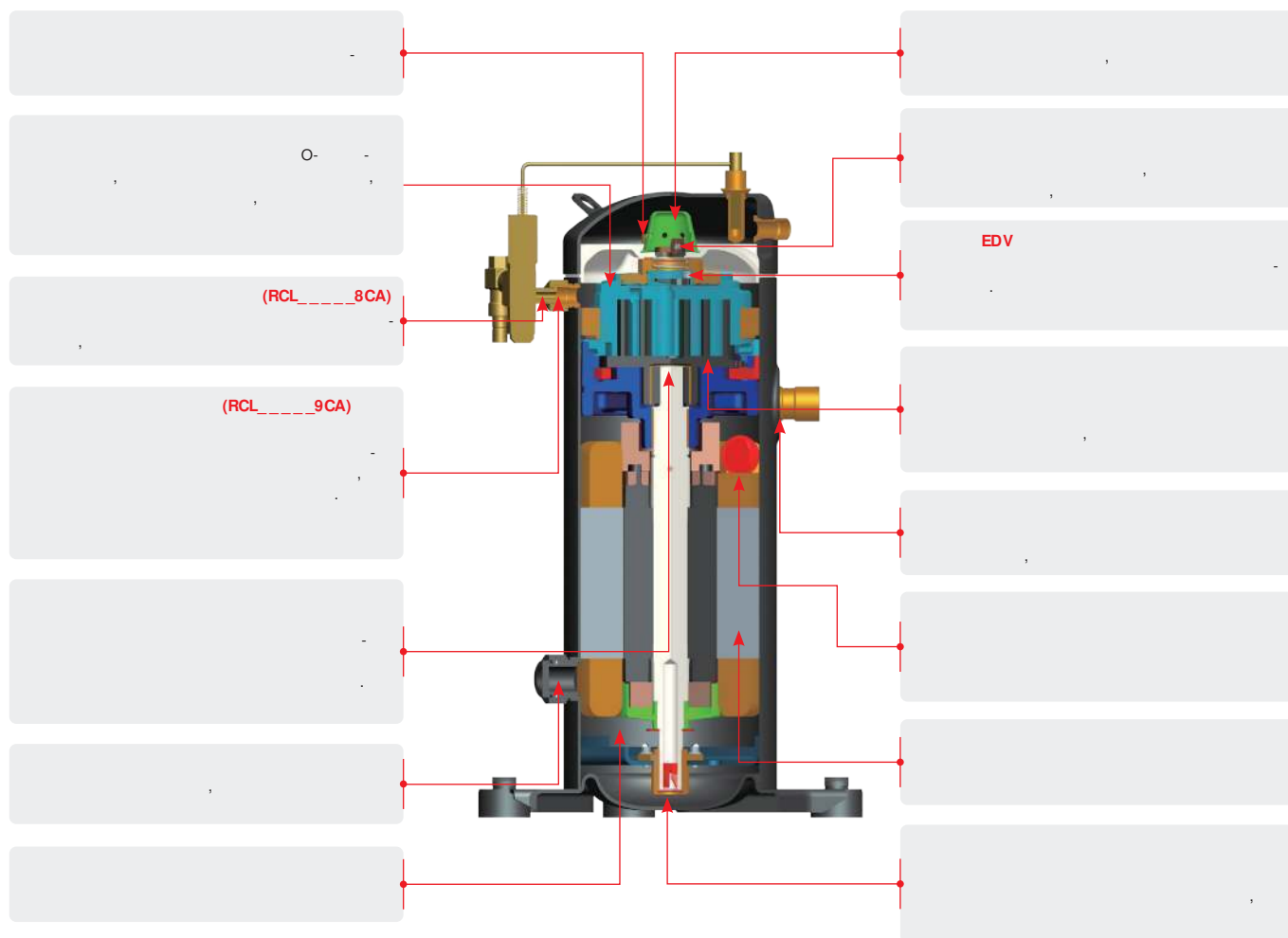
•

3

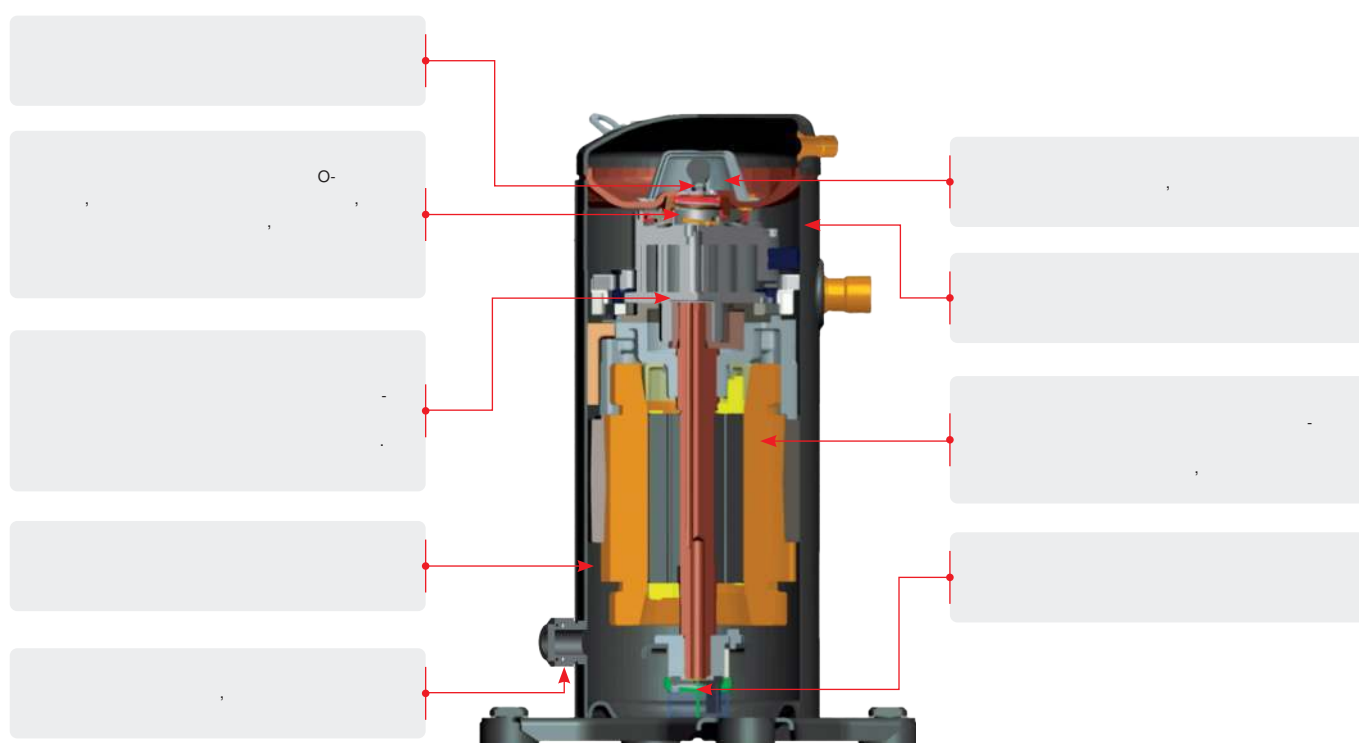
,

,

RCM, RCL



RCVM



RCM

R404A

	RCM09	RCM11	RCM13	RCM15	RCM19	RCM21
, / /	380-420 /3 /50	380-420 /3 /50	380-420 B/ 3 /50	380-420 B/ 3 /50	380-420 B/ 3 /50	380-420 B/ 3 /50
, . .	1,2	1,4	1,7	2	2,5	3
, 3/ 50	3,7	4,3	5,3	6,1	7,2	8,5
, 3/	21,5	25,0	30,5	35,1	41,4	48,9
	R404A	R404A	R404A	R404A	R404A	R404A
,	2340	2724	3310	3760	4430	5120
,	1310	1437	1700	1890	2260	2525
[COP], /	1,79	1,90	1,95	2,00	2,00	2,00
[RLA],	2,8	2,9	3,3	3,5	4,3	5,1
[LRA],	22	22	22	22	41	41
[MOC],	3,3	3,8	4,7	5,4	6,3	7,5
,	70	70	70	70	70	70
	237	237	237	237	237	237
	237	237	237	237	237	237
	413	413	413	413	413	413
,	190,5x190,5 (8,5)	190,5x190,5 (8,5)	190,5x190,5 (8,5)	190,5x190,5 (8,5)	190,5x190,5 (8,5)	190,5x190,5 (8,5)
	POE	POE				
,	1,4	1,4	1,4	1,4	1,4	1,4
,	1,25	1,25	1,25	1,25	1,25	1,25
	32	32	32	32	32	32
	20	20	20	20	20	20
,	24,0	24,0	24,0	24,5	25,5	25,5

	RCM26	RCM30	RCM38	RCM45	RCM51	RCM57
, / /	380-420 B/ 3 /50	380-420 / 3 /50	380-420 / 3 /50	380-420 / 3 /50	380-420 / 3 /50	380-420 / 3 /50
, . .	3,5	4	5	6	7	8
, 3/ 50	10,1	11,5	14,4	17,4	19,5	21,3
, 3/	58,0	66,1	82,8	100,0	112,1	122,4
	R404A	R404A	R404A	R404A	R404A	R404A
,	6210	7525	8970	10980	12500	13550
,	3104	3575	4250	5289	5949	5766
[COP], /	2,00	2,10	2,10	2,08	2,10	2,35
[RLA],	6,0	6,8	7,7	9,7	11,0	10,6
[LRA],	41	61	61	75	87	87
[MOC],	8,8	10,3	12,9	14,3	17,5	16,4
,	70	70	70	70	70	70
	237	237	237	237	237	237
	237	237	237	244	244	244
	413	413	413	436	436	436
,	190,5x190,5 (8,5)	190,5x190,5 (8,5)	190,5x190,5 (8,5)	190,5x190,5 (8,5)	190,5x190,5 (8,5)	190,5x190,5 (8,5)
	POE	POE	POE	POE	POE	POE
,	1,4	1,4	1,4	1,4	1,7	1,7
,	1,25	1,25	1,25	1,25	1,45	1,45
	32	32	32	32	32	30
	20	20	20	20	20	20
,	25,5	28,0	28,0	33,7	35,3	35,5

:ARI

: -6,7 °C

:48,9 °C

:18,3 °C

:OK

RCM

R404A

		RCM66	RCM77	RCM88	RCM95	RCM107	RCM114
		380-420 / 3 /50	380-420 / 3 /50	380-420 / 3 /50	380-420 / 3 /50	380-420 / 3 /50	380-420 / 3 /50
		9	10	12	13	15	20
		25,7	30,0	34,0	36,4	41,3	44,3
		147,7	172,4	195,4	209,2	237,4	254,6
		R404A	R404A	R404A	R404A	R404A	R404A
		16270	18920	21560	22950	26000	27700
		7715	8885	10192	10809	12457	13355
		[COP], /	2,11	2,13	2,12	2,12	2,09
		[RLA],	14,2	16,4	18,8	19,9	22,9
		[LRA],	100	114	129	148,5	148,5
		[MOC],	21,0	23,6	26,5	27,6	32,8
		90	90	90	90	90	90
		250	250	250	250	250	250
		274	274	274	274	274	274
		548	548	548	548	548	548
		190,5 190,5 (8,5)	190,5 190,5 (8,5)	190,5 190,5 (8,5)	190,5 190,5 (8,5)	190,5 190,5 (8,5)	190,5 190,5 (8,5)
		3,5	3,5	3,5	3,5	3,5	3,5
		3	3	3	3	3	3
		32	32	32	32	32	32
		20	20	20	20	20	20
		54,5	55,8	56,8	58,5	59,0	59,3

:ARI
: -6,7 °C
:48,9 °C
:18,3 °C
:0K

RCL ()

R404A

	RCL03	RCL04	RCL05	RCL06	RCL08	RCL09
, / /	380-420 / 3 /50	380-420 / 3 /50	380-420 / 3 /50	380-420 / 3 /50	380-420 / 3 /50	380-420 / 3 /50
, . .	1,2	1,4	1,7	2	2,5	3
, ³ / 50	3,7	4,3	5,3	6,1	7,2	8,5
, ³ /	21,3	24,7	30,5	35,1	41,4	48,9
	R404A	R404A	R404A	R404A	R404A	R404A
	988	1155	1410	1620	1920	2250
	990	1050	1230	1400	1690	1900
[COP], /	1,00	1,10	1,15	1,16	1,14	1,18
[RLA],	1,8	1,9	2,3	2,6	3,1	3,5
[LRA],	22	22	22	22	41	41
[MOC],	2,2	2,6	3,2	3,8	4,9	5,8
	70	70	70	70	70	70
	237	237	237	237	237	237
	237	237	237	237	237	237
	413	413	413	413	413	413
	190,5 190,5 (8,5)	190,5 190,5 (8,5)	190,5 190,5 (8,5)	190,5 190,5 (8,5)	190,5 190,5 (8,5)	190,5 190,5 (8,5)
	POE					
	1,4	1,4	1,4	1,4	1,4	1,4
	1,25	1,25	1,25	1,25	1,25	1,25
	32	32	32	32	32	32
	20	20	20	20	20	20
	24,0	24,0	24,5	25,5	25,5	25,5

	RCL11	RCL13	RCL15	RCL18	RCL24	RCL28
, / /	380-420 / 3 /50	380-420 / 3 /50	380-420 / 3 /50	380-420 / 3 /50	380-420 / 3 /50	380-420 / 3 /50
, . .	3,5	4	5	6	7,5	9
, ³ / 50	10,1	11,5	14,4	17,4	21,3	25,7
, ³ /	58,0	66,1	82,8	100,0	122,4	147,7
	R404A	R404A	R404A	R404A	R404A	R404A
	2680	3050	3850	4600	5680	6800
	2350	2621	2940	3485	4279	5099
[COP], /	1,14	1,16	1,31	1,32	1,33	1,33
[RLA],	4,3	4,8	5,4	6,4	7,9	9,4
[LRA],	41	61	61	75	87	100
[MOC],	7,7	8,8	10,3	12,1	14,8	20,1
	70	70	70	70	70	90
	237	237	237	237	237	250
	237	237	237	244	244	274
	413	413	413	436	436	548
	190,5 190,5 (8,5)	190,5 190,5 (8,5)	190,5 190,5 (8,5)	190,5 190,5 (8,5)	190,5 190,5 (8,5)	190,5 190,5 (8,5)
	1,4	1,4	1,4	1,7	1,7	3,5
	1,25	1,25	1,25	1,45	1,45	3
	32	32	32	32	32	32
	20	20	20	20	20	20
	28,0	28,0	33,7	35,3	35,5	54,5

:ARI

: -31,7 °C

: 40,6 °C

: 18,3 °C

:OK

RCL () R404A

		RCL34	RCL38	RCL41	RCL45	RCL51
		380-420 / 3 /50	380-420 / 3 /50	380-420 / 3 /50	380-420 / 3 /50	380-420 / 3 /50
		10	12	13	15	17
		30,0	34,0	36,4	41,3	44,3
		172,4	195,4	209,2	237,4	254,6
		R404A	R404A	R404A	R404A	R404A
		7900	9000	9650	11000	12300
		5940	6842	7370	8360	9400
		[COP], /	1,33	1,32	1,31	1,32
		[RLA],	10,9	12,6	13,6	15,4
		[LRA],	114	129	148,5	148,5
		[MOC],	22,3	25,6	27,4	31,1
		90	90	90	90	90
		250	250	250	250	250
		274	274	274	274	274
		548	548	548	548	548
		190,5 190,5 (8,5)	190,5 190,5 (8,5)	190,5 190,5 (8,5)	190,5 190,5 (8,5)	190,5 190,5 (8,5)
		3,5	3,5	3,5	3,5	3,5
		3	3	3	3	3
		32	32	32	32	32
		20	20	20	20	20
		55,8	56,8	58,5	59,0	59,3

:ARI
:-31,7 °C
:40,6 °C
:18,3 °C
:0K

RCL ()

R404A

	RCL03	RCL05	RCL06	RCL08	RCL09	RCL11
, / /	380-420 / 3 /50	380-420 / 3 /50	380-420 / 3 /50	380-420 / 3 /50	380-420 / 3 /50	380-420 / 3 /50
, . .	1,2	1,7	2	2,5	3	3,5
, ³ / 50	3,7	5,3	6,1	7,2	8,5	10,1
, ³ /	21,3	30,5	35,1	41,4	48,9	58,0
	R404A	R404A	R404A	R404A	R404A	R404A
, ,	1450	2080	2480	3000	3450	4060
, ,	1140	1413	1603	1935	2176	2691
[COP], /	1,27	1,47	1,55	1,55	1,59	1,51
[RLA],	2,1	2,6	3,0	3,6	4,0	5,0
[LRA],	22	22	22	41	41	41
[MOC],	2,4	3,5	4,2	5,4	6,4	8,5
, ,	70	70	70	70	70	70
, ,	237	237	237	237	237	237
	237	237	237	237	237	237
	413	413	413	413	413	413
, ,	190,5 190,5 (8,5)	190,5 190,5 (8,5)	190,5 190,5 (8,5)	190,5 190,5 (8,5)	190,5 190,5 (8,5)	190,5 190,5 (8,5)
, ,	1,4	1,4	1,4	1,4	1,4	1,4
, ,	1,25	1,25	1,25	1,25	1,25	1,25
, ,	32	32	32	32	32	32
	20	20	20	20	20	20
, ,	24,0	24,5	25,5	25,5	25,5	28,0

	RCL13	RCL15	RCL18	RCL24	RCL28	RCL34
, / /	380-420 / 3 /50	380-420 / 3 /50	380-420 / 3 /50	380-420 / 3 /50	380-420 / 3 /50	380-420 / 3 /50
, . .	4	5	6	7,5	9	10
, ³ / 50	11,5	14,4	17,4	21,3	25,7	30,0
, ³ /	66,1	82,8	100,0	122,4	147,7	172,4
	R404A	R404A	R404A	R404A	R404A	R404A
, ,	4630	5850	6980	8600	10330	12000
, ,	3001	3366	3991	4899	5838	6801
[COP], /	1,54	1,74	1,75	1,76	1,77	1,76
[RLA],	5,5	6,2	7,3	9,0	10,8	12,5
[LRA],	61	61	75	87	100	114
[MOC],	9,7	11,3	13,3	16,3	22,1	24,5
, ,	70	70	70	70	90	90
, ,	237	237	237	237	250	250
	237	237	244	244	274	274
	413	413	436	436	548	548
, ,	190,5 190,5 (8,5)	190,5 190,5 (8,5)	190,5 190,5 (8,5)	190,5 190,5 (8,5)	190,5 190,5 (8,5)	190,5 190,5 (8,5)
, ,	1,4	1,4	1,7	1,7	3,5	3,5
, ,	1,25	1,25	1,45	1,45	3	3
, ,	32	32	32	32	32	32
	20	20	20	20	20	20
, ,	28,0	33,7	35,3	35,5	54,5	55,8

:ARI

: -31,7 °C

:40,6 °C

:18,3 °C

:0K

RCL ()

R404A

		RCL38	RCL41	RCL45	RCL51
		380-420 /3 /50	380-420 /3 /50	380-420 /3 /50	380-420 /3 /50
		12	13	15	17
		34,0	36,4	41,3	44,3
		195,4	209,2	237,4	254,6
		R404A	R404A	R404A	R404A
		13800	14700	16650	18600
		7834	8439	9572	10500
		[COP], /	1,76	1,74	1,74
		[RLA],	14,4	15,5	17,6
		[LRA],	129	148,5	148,5
		[MOC],	28,2	30,1	34,2
			90	90	90
		250	250	250	250
		274	274	274	274
		548	548	548	548
		190,5 190,5 (8,5)	190,5 190,5 (8,5)	190,5 190,5 (8,5)	190,5 190,5 (8,5)
		3,5	3,5	3,5	3,5
		3	3	3	3
		32	32	32	32
		20	20	20	20
		56,8	58,5	59,0	59,3

:ARI
: -31,7 °C
:40,6 °C
:18,3 °C
:OK

RCVM /

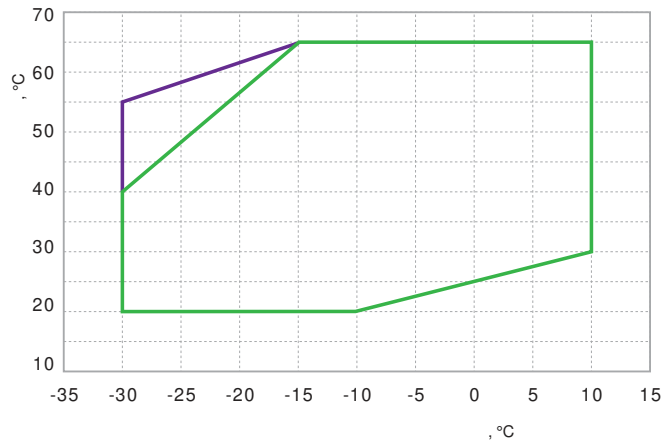
R404A

		RCVM38	RCVM42	RCVM50	RCVM60	RCVM72
		380-420 /3	380-420 /3	380-420 /3	380-420 /3	380-420 /3
		7,5	9	10	12	13
		38	42	50	60	72
		R404A	R404A	R404A	R404A	R404A
		6240	6742	7883	9459	11351
		3375	3647	3902	4614	5537
		[COP], /	1,85	1,85	2,02	2,05
		[RLA],	5,3	5,8	7,2	8,5
		[MOC],	25	25	25	25
		90	90	90	90	90
		239	239	239	239	239
		252	252	252	252	252
		420	420	420	420	420
		190,5 190,5 (8,5)	190,5 190,5 (8,5)	190,5 190,5 (8,5)	190,5 190,5 (8,5)	190,5 190,5 (8,5)
		1,4	1,4	1,4	1,4	1,4
		1,25	1,25	1,25	1,25	1,25
		43	43	43	43	43
		20	20	20	20	20
		29,5	29,5	29,5	29,5	29,5

* 11,1 °C, :0 °C. 4500 / : -6,7 °C, 48,9 °C.
:1800-5400 / .

RCM

R404A/R507

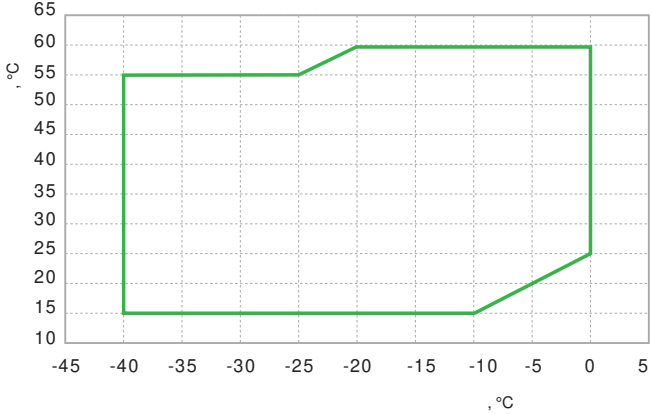


11,1

18,3 °

RCL

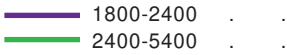
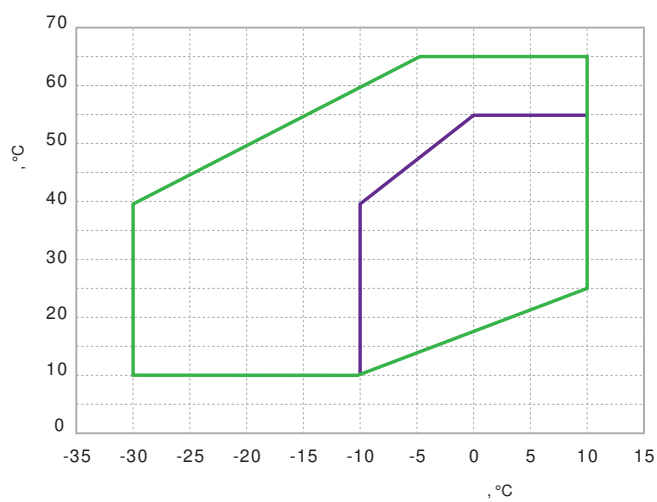
R404A/R507

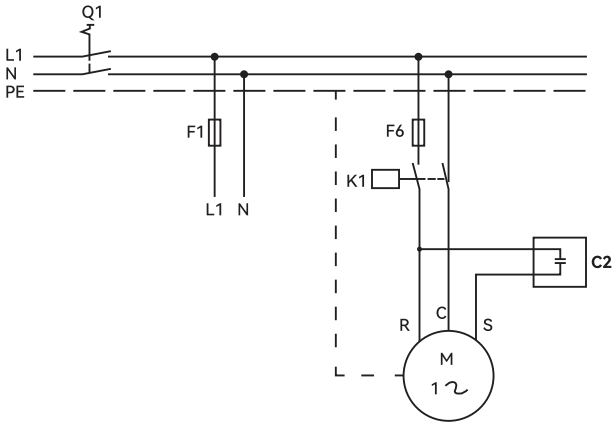


18,3 °

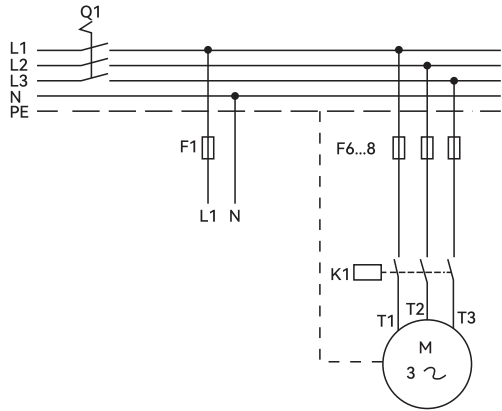
RCVM

R404A/R507



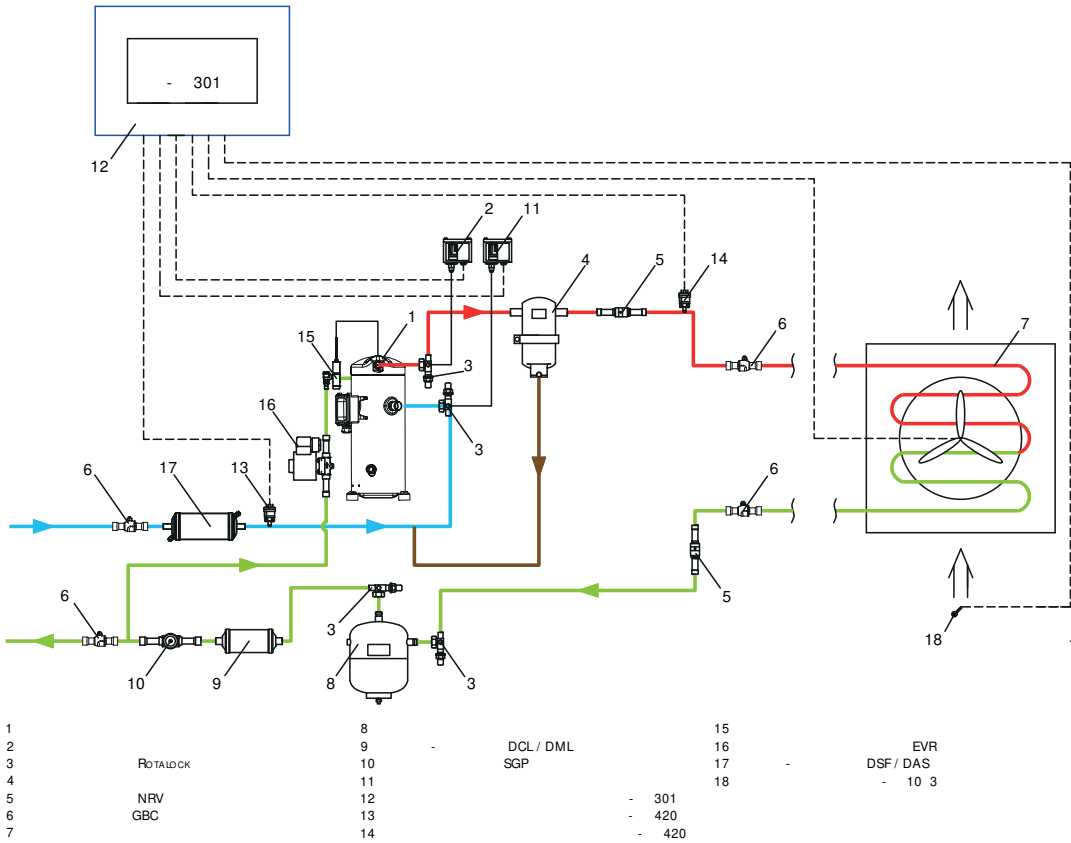


L1/N/PE: (/ /)
Q1:
F1/F6:
K1:
C2:
M:
R/C/S:

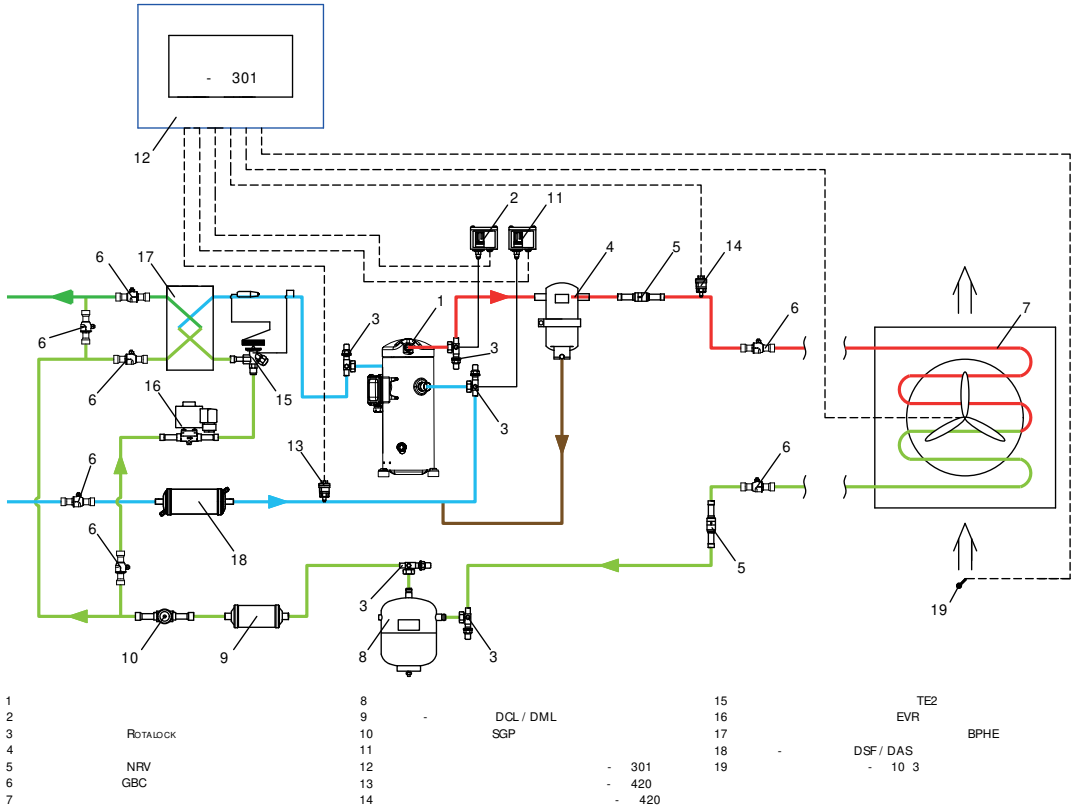


L1/L2/L3/N/PE (/ /)
Q1:
F1/F6...8:
K1:
M:
T1/T2/T3:

RCL



() RCL

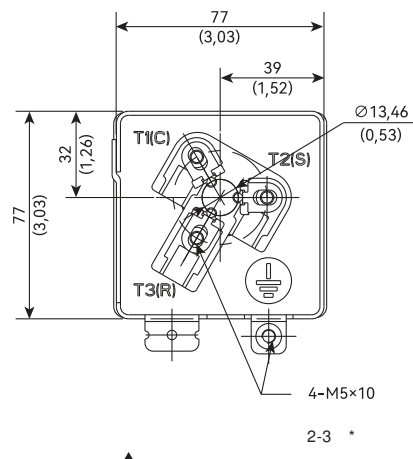
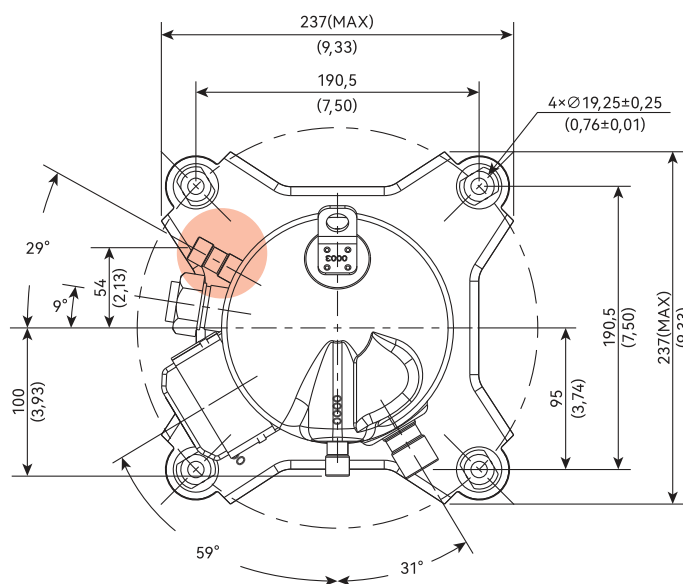


1,5-5 . . .

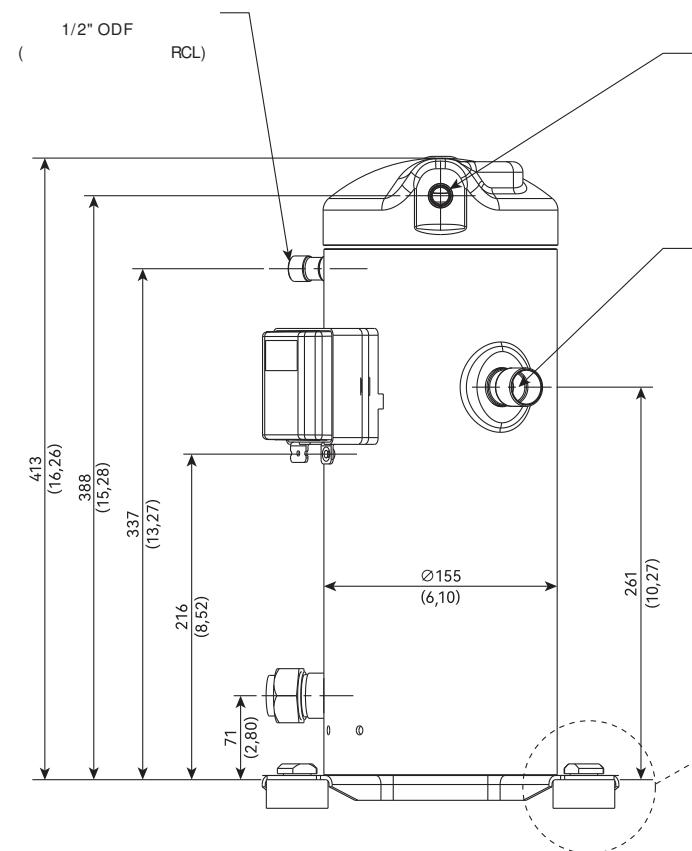
1,5-5 . . .

RCM09-RCM38

RCL03-RCL15

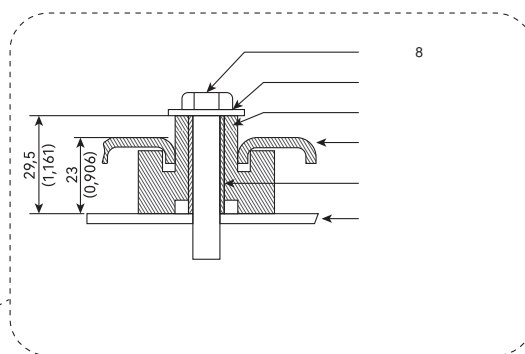


RCL



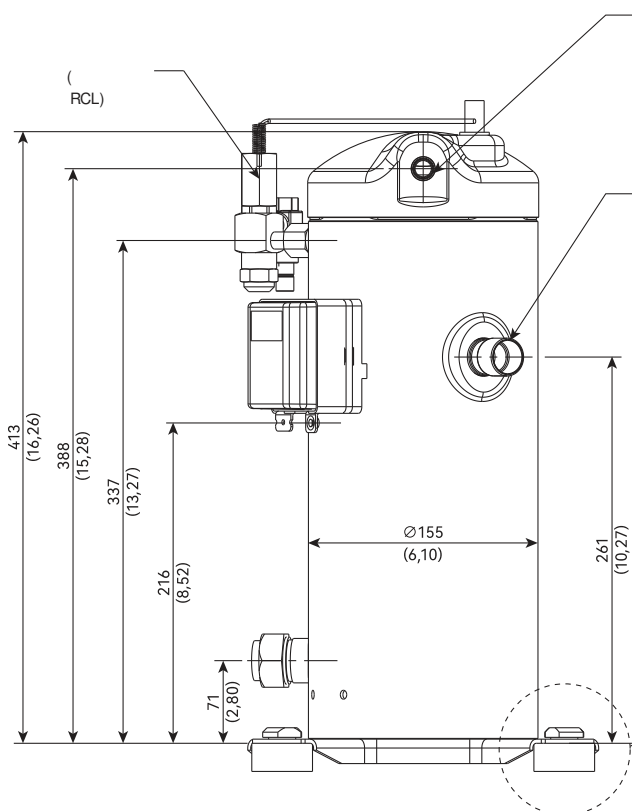
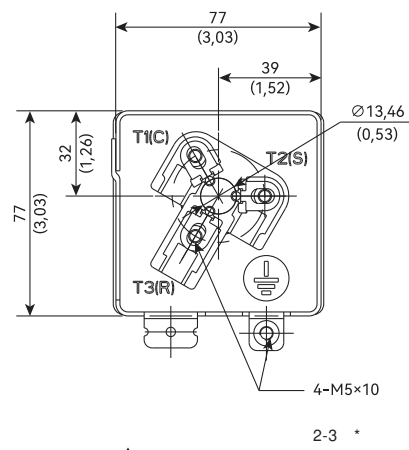
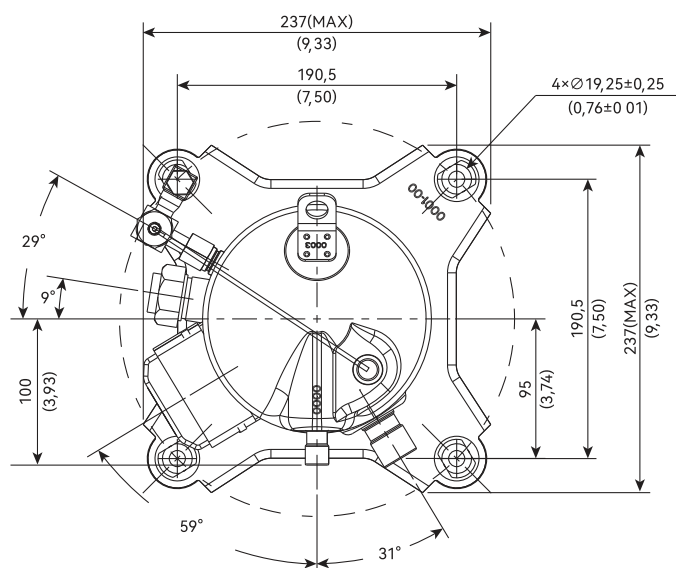
1/2" ODF
1"-14 UNS-2A

7/8" ODF
1"1/4-12 UNF-2A



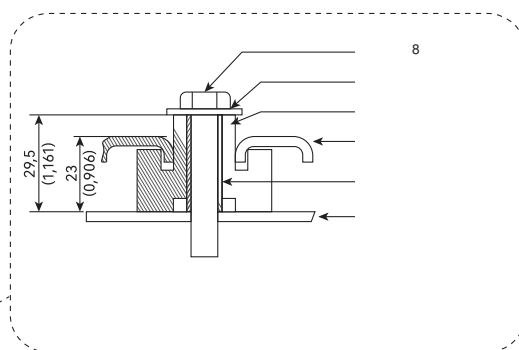
1,5-5 . .

RCL03-RCL15



1/2" ODF
1"-14 UNS-2A

7/8" ODF
1 1/4-12 UNF-2A



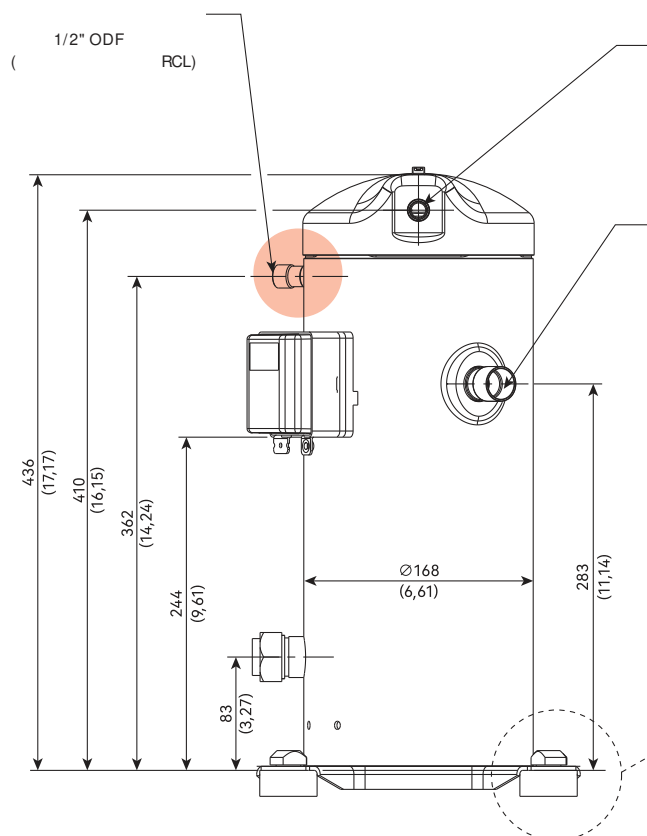
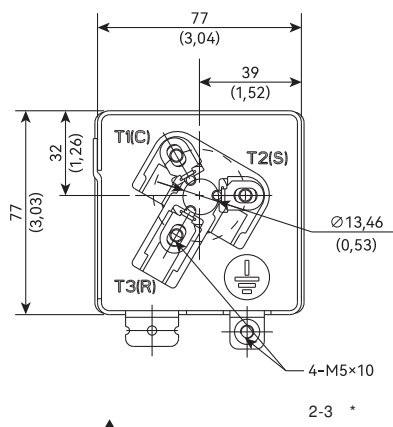
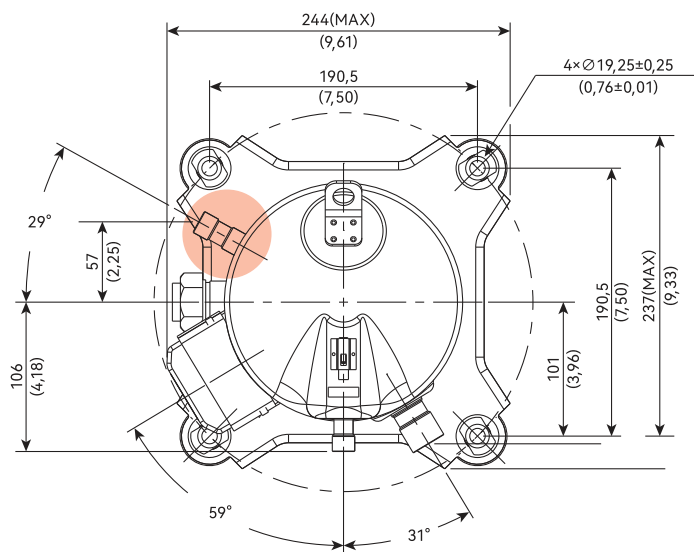
6-8 . . .

6-8 . . .

RCM45-RCM57

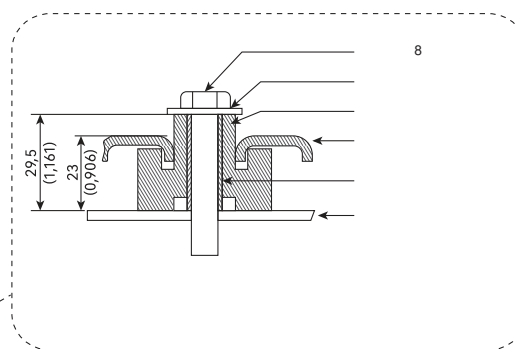
RCL18-RCL24

RCL



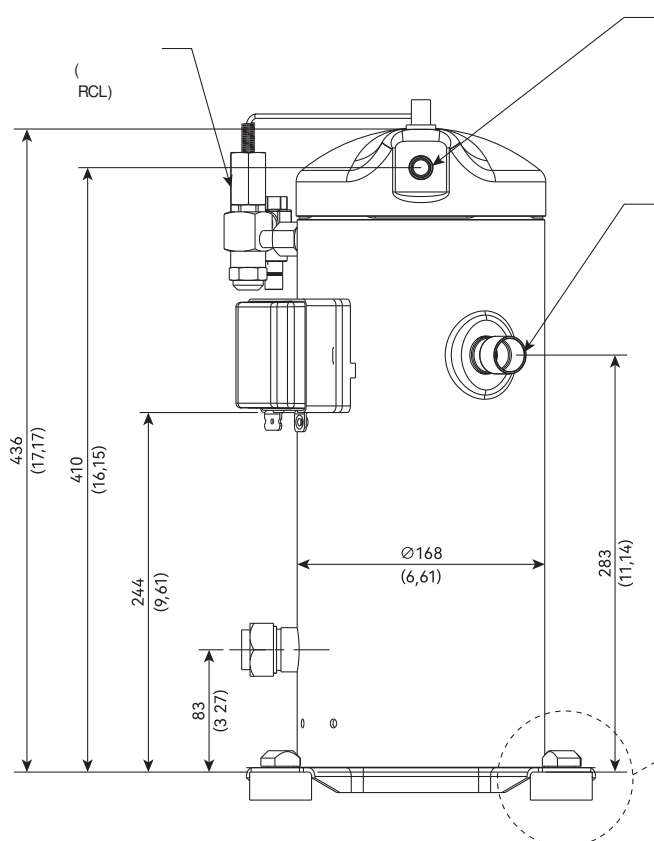
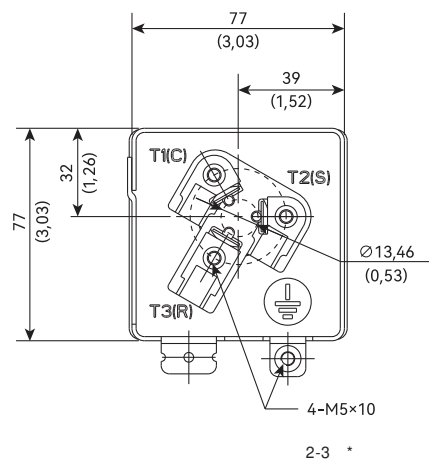
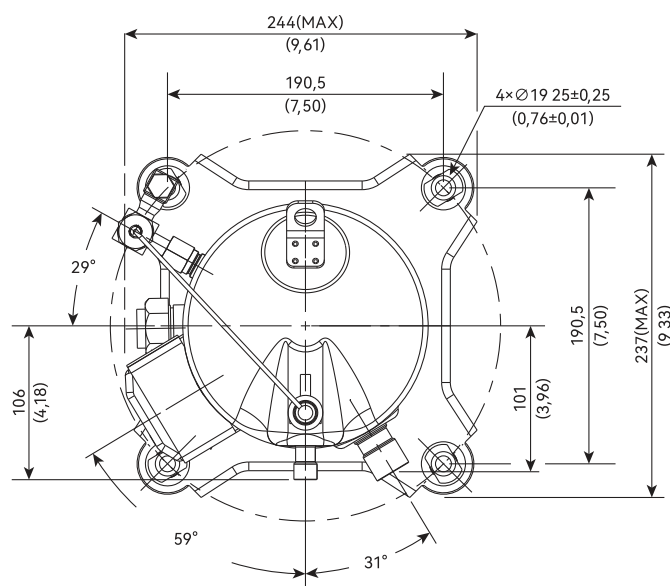
1/2" ODF
1"-14 UNS-2A

7/8" ODF
1"1/4-12 UNF-2A



6-8 . . .

RCL18-RCL24

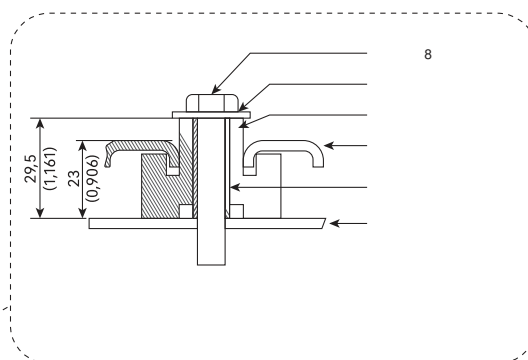


1/2" ODF

1"-14 UNS-2A

7/8" ODF

1"-1/4-12 UNF-2A



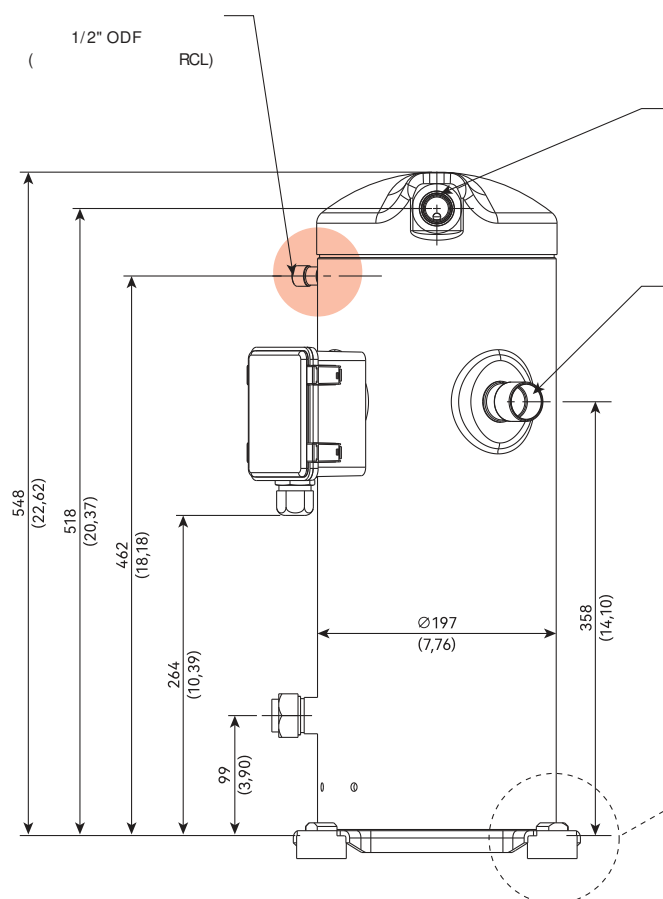
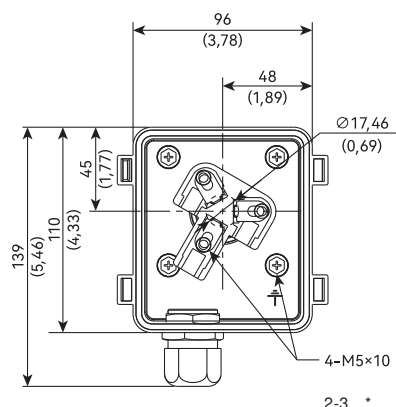
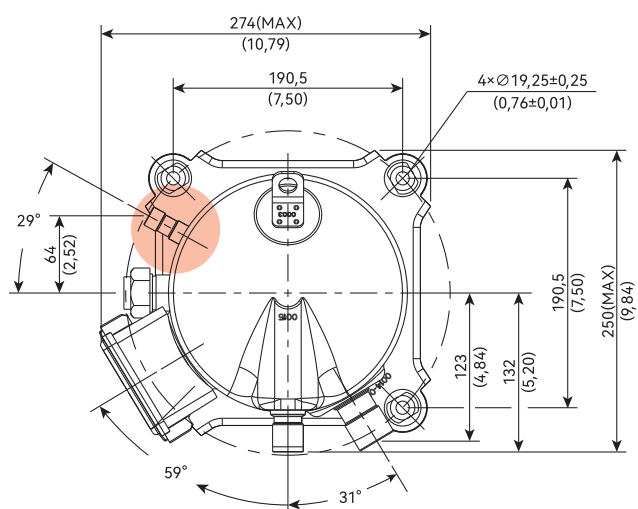
9-20 . . .

9-20 . . .

RCM66-RCM114

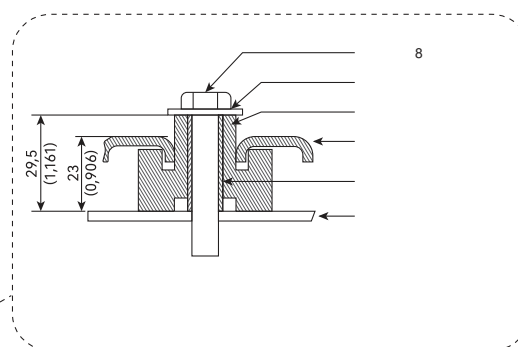
RCL28-RCL51

RCL



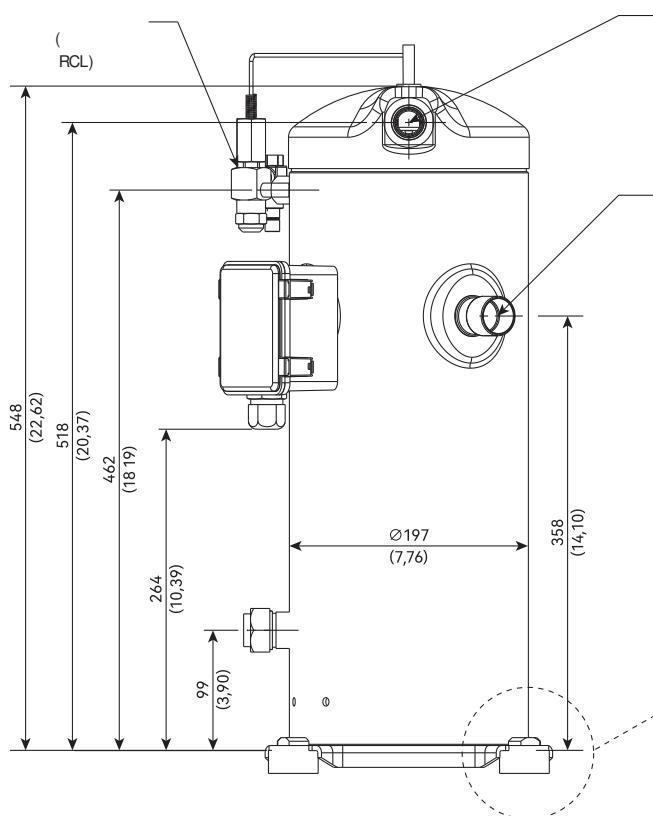
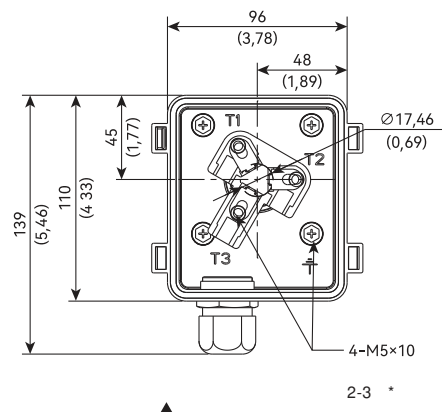
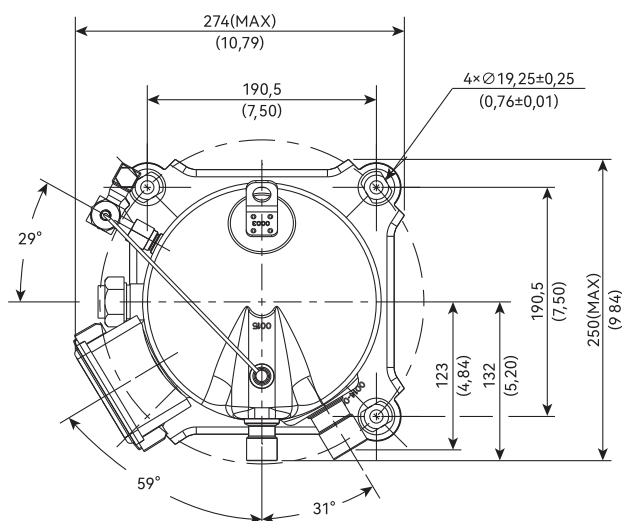
7/8" ODF
1"1/4-12 UNF-2A

1 1/8" ODF
1 3/4"-12 UN-2A



9-17 . . .

RCL28-RCL51

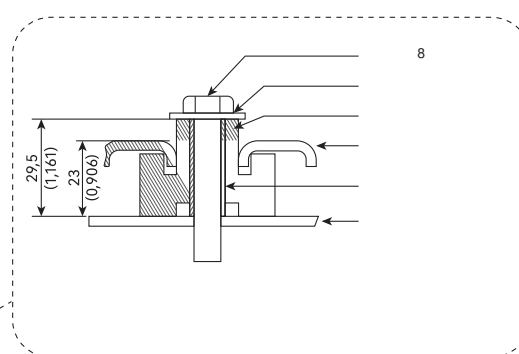


7/8" ODF

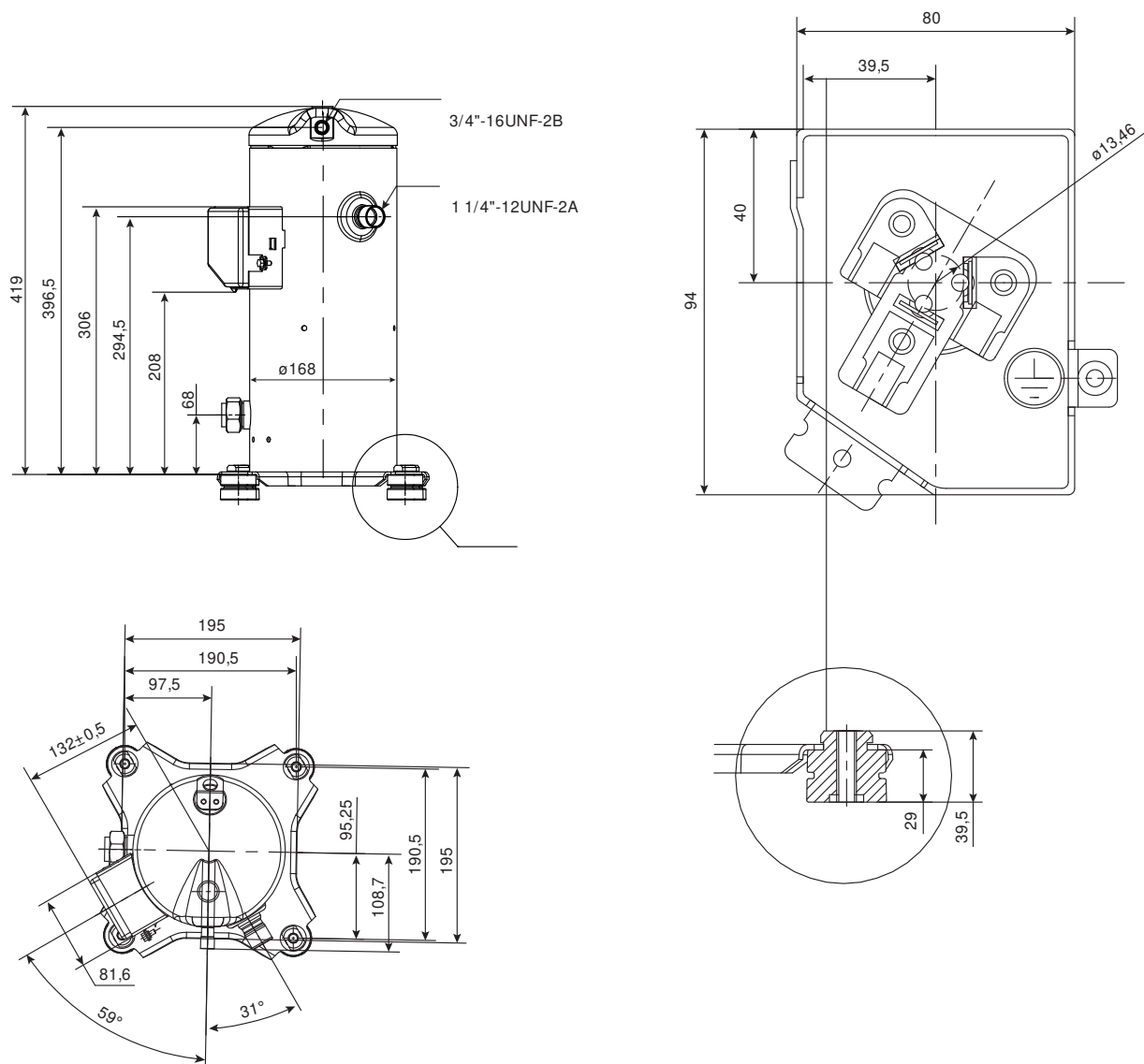
1"1/4-12 UNF-2A

1 1/8" ODF

1 3/4"-12 UN-2A



RCVM38-RCVM72



RCM

R404

—					—				
		380-420 / 3 /50	220 / 1 /50	220 / 3 /50			380-420 / 3 /50	220 / 1 /50	220 / 3 /50
RCM09	7	141R8601	141R8651	141R8671	RCM09	7	141R8811	141R8861	141R8881
RCM11	7	141R8603	141R8653	141R8673	RCM11	7	141R8813	141R8863	141R8883
RCM13	7	141R8605	141R8655	141R8675	RCM13	7	141R8815	141R8865	141R8885
RCM15	7	141R8607	141R8657	141R8677	RCM15	7	141R8817	141R8867	141R8887
RCM19	7	141R8609	141R8659	141R8679	RCM19	7	141R8819	141R8869	141R8889
RCM21	7	141R8611	141R8661	141R8681	RCM21	7	141R8821	141R8871	141R8891
RCM26	7	141R8613	141R8663	141R8683	RCM26	7	141R8823	141R8873	141R8893
RCM30	7	141R8615	141R8665	141R8685	RCM30	7	141R8825	141R8875	141R8895
RCM38	7	141R8617	—	141R8687	RCM38	7	141R8827	—	141R8897
RCM45	7	141R8619	—	141R8689	RCM45	7	141R8829	—	141R8899
RCM51	7	141R8621	—	141R8691	RCM51	7	141R8831	—	141R8901
RCM57	7	141R8623	—	141R8693	RCM57	7	141R8833	—	141R8903
RCM66	7	141R8625	—	141R8695	RCM66	7	141R8835	—	141R8905
RCM77	7	141R8627	—	141R8697	RCM77	7	141R8837	—	141R8907
RCM88	7	141R8629	—	141R8699	RCM88	7	141R8839	—	141R8909
RCM95	7	141R8631	—	141R8701	RCM95	7	141R8841	—	141R8911
RCM107	7	141R8633	—	141R8703	RCM107	7	141R8843	—	141R8913
RCM114	7	141R8635	—	141R8705	RCM114	7	141R8845	—	141R8915

R404

—					—				
		380-420 / 3 /50	220 / 1 /50	220 / 3 /50			380-420 / 3 /50	220 / 1 /50	220 / 3 /50
RCM09	7	141R8602	141R8652	141R8672	RCM09	7	141R8812	141R8862	141R8882
RCM11	7	141R8604	141R8654	141R8674	RCM11	7	141R8814	141R8864	141R8884
RCM13	7	141R8606	141R8656	141R8676	RCM13	7	141R8816	141R8866	141R8886
RCM15	7	141R8608	141R8658	141R8678	RCM15	7	141R8818	141R8868	141R8888
RCM19	7	141R8610	141R8660	141R8680	RCM19	7	141R8820	141R8870	141R8890
RCM21	7	141R8612	141R8662	141R8682	RCM21	7	141R8822	141R8872	141R8892
RCM26	7	141R8614	141R8664	141R8684	RCM26	7	141R8824	141R8874	141R8894
RCM30	7	141R8616	141R8666	141R8686	RCM30	7	141R8826	141R8876	141R8896
RCM38	7	141R8618	—	141R8688	RCM38	7	141R8828	—	141R8898
RCM45	7	141R8620	—	141R8690	RCM45	7	141R8830	—	141R8900
RCM51	7	141R8622	—	141R8692	RCM51	7	141R8832	—	141R8902
RCM57	7	141R8624	—	141R8694	RCM57	7	141R8834	—	141R8904
RCM66	7	141R8626	—	141R8696	RCM66	7	141R8836	—	141R8906
RCM77	7	141R8628	—	141R8698	RCM77	7	141R8838	—	141R8908
RCM88	7	141R8630	—	141R8700	RCM88	7	141R8840	—	141R8910
RCM95	7	141R8632	—	141R8702	RCM95	7	141R8842	—	141R8912
RCM107	7	141R8634	—	141R8704	RCM107	7	141R8844	—	141R8914
RCM114	7	141R8636	—	141R8706	RCM114	7	141R8846	—	141R8916

RCL

R404

		380-420 / 3 /50	220 / 1 /50	220 / 3 /50			380-420 / 3 /50	220 / 1 /50	220 / 3 /50
RCL03	8	141R9521	141R9601	—	RCL03	8	141R9522	141R9602	—
	9	141R9741	141R9821	—		9	141R9742	141R9822	—
RCL04	8	141R9523	141R9603	—	RCL04	8	141R9524	141R9604	—
	9	141R9743	141R9823	—		9	141R9744	141R9824	—
RCL05	8	141R9525	141R9605	—	RCL05	8	141R9526	141R9606	—
	9	141R9745	141R9825	—		9	141R9746	141R9826	—
RCL06	8	141R9527	141R9607	—	RCL06	8	141R9528	141R9608	—
	9	141R9747	141R9827	—		9	141R9748	141R9828	—
RCL08	8	141R9529	141R9609	—	RCL08	8	141R9530	141R9610	—
	9	141R9749	141R9829	—		9	141R9750	141R9830	—
RCL09	8	141R9531	141R9611	—	RCL09	8	141R9532	141R9612	—
	9	141R9751	141R9831	—		9	141R9752	141R9832	—
RCL11	8	141R9533	141R9613	—	RCL11	8	141R9534	141R9614	—
	9	141R9753	141R9833	—		9	141R9754	141R9834	—
RCL13	8	141R9535	141R9615	—	RCL13	8	141R9536	141R9616	—
	9	141R9755	141R9835	—		9	141R9756	141R9836	—
RCL15	8	141R9537	—	—	RCL15	8	141R9538	—	—
	9	141R9757	—	—		9	141R9758	—	—
RCL18	8	141R9539	—	—	RCL18	8	141R9540	—	—
	9	141R9759	—	—		9	141R9760	—	—
RCL24	8	141R9541	—	—	RCL24	8	141R9542	—	—
	9	141R9761	—	—		9	141R9762	—	—
RCL28	8	141R9543	—	—	RCL28	8	141R9544	—	—
	9	141R9763	—	—		9	141R9764	—	—
RCL34	8	141R9545	—	—	RCL34	8	141R9546	—	—
	9	141R9765	—	—		9	141R9766	—	—
RCL38	8	141R9547	—	—	RCL38	8	141R9548	—	—
	9	141R9767	—	—		9	141R9768	—	—
RCL41	8	141R9549	—	—	RCL41	8	141R9550	—	—
	9	141R9769	—	—		9	141R9770	—	—
RCL45	8	141R9551	—	—	RCL45	8	141R9552	—	—
	9	141R9771	—	—		9	141R9772	—	—
RCL51	8	141R9553	—	—	RCL51	8	141R9554	—	—
	9	141R9773	—	—		9	141R9774	—	—

RCVM

R410A

		380-420 /3
RCVM38	7	120R0400R
RCVM42	7	120R0402R
RCVM50	7	120R0404R
RCVM60	7	120R0406R
RCVM72	7	120R0408R